

CANDIDATE  
NAME

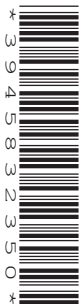
--

CENTRE  
NUMBER

--	--	--	--	--

CANDIDATE  
NUMBER

--	--	--	--



**BIOLOGY**

**5090/21**

Paper 2 Theory

**October/November 2017**

**1 hour 45 minutes**

Candidates answer on the Question Paper.

No Additional Materials are required.

**READ THESE INSTRUCTIONS FIRST**

Write your Centre number, candidate number and name on all the work you hand in.

Write in dark blue or black pen.

You may use an HB pencil for any diagrams or graphs.

Do not use staples, paper clips, glue or correction fluid.

DO **NOT** WRITE IN ANY BARCODES.

**Section A**

Answer **all** questions in this section.

Write your answers in the spaces provided on the Question Paper.

**Section B**

Answer **both** questions in this section.

Write your answers in the spaces provided on the Question Paper.

**Section C**

Answer **either** question 8 **or** question 9.

Write your answers in the spaces provided on the Question Paper.

You are advised to spend no longer than one hour on Section A.

Electronic calculators may be used.

You may lose marks if you do not show your working or if you do not use appropriate units.

At the end of the examination, fasten all your work securely together.

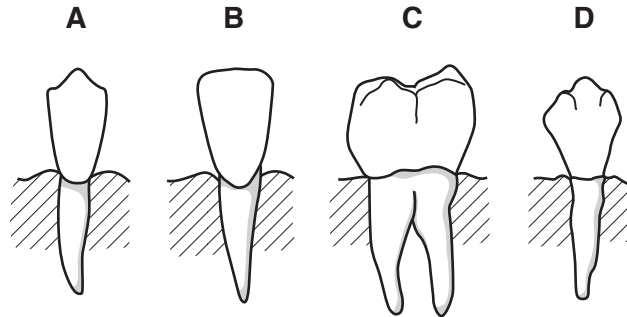
The number of marks is given in brackets [ ] at the end of each question or part question.

This document consists of **14** printed pages and **2** blank pages.

**Section A**

Answer **all** questions in this section.

1 Fig. 1.1 shows four types of human teeth **A**, **B**, **C** and **D**.



**Fig. 1.1**

Fig. 1.2 below shows the arrangement of teeth in the lower jaw of a human.

(a) Complete Fig. 1.2 to show the following for each of the two types of teeth indicated:

- the identity of each type of tooth by writing the correct letter **A**, **B**, **C** or **D** from Fig. 1.1
- the name of each type of tooth
- **one** function of each type of tooth.

[6]

letter from Fig. 1.1 .....

name of type of tooth .....

**one** function .....

.....

letter from Fig. 1.1 .....

name of type of tooth .....

**one** function .....

.....

**Fig. 1.2**

(b) (i) State the causes of dental decay.

.....  
.....  
.....  
.....[2]

(ii) Describe the proper care of teeth.

.....  
.....  
.....  
.....[2]

[Total: 10]

2 Fig. 2.1 shows a section through a human kidney and its associated structures.

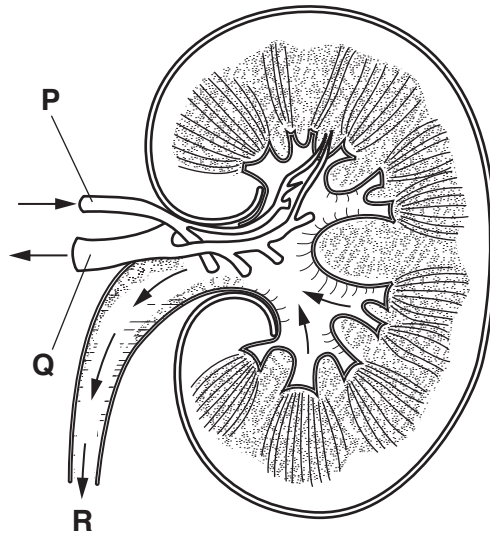


Fig. 2.1

(a) (i) Name the blood vessels **P** and **Q** in Fig. 2.1.

**P** .....

**Q** .....

[2]

(ii) Name the fluid **R** in Fig. 2.1 and describe the route taken by this fluid from leaving the kidney to being removed from the body.

name of fluid .....

route taken by fluid .....

.....

.....

.....

[4]

- (b) A person with kidney damage requires the process of dialysis to take place several times each week.

Before dialysis begins, a surgical procedure is used to create a connection, called an AV fistula, between two blood vessels in the arm.

Fig. 2.2 shows the AV fistula and the connections between the blood vessels and a kidney machine.

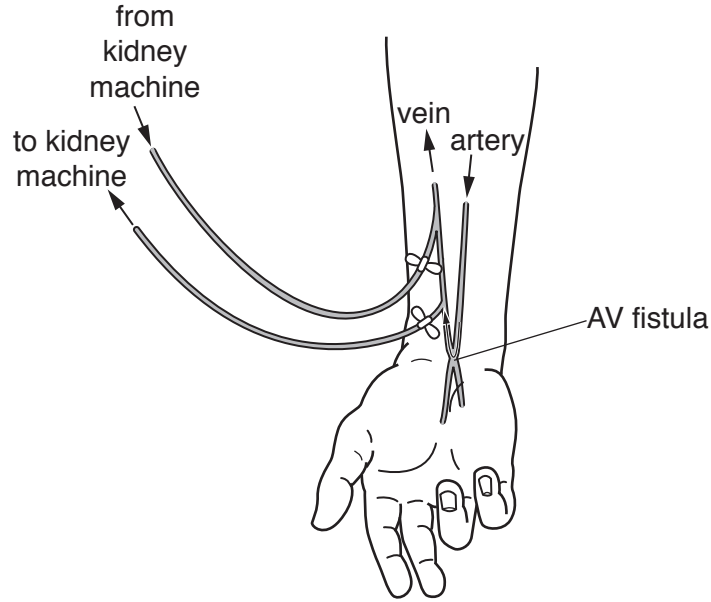


Fig. 2.2

- (i) Suggest why the connection made between blood vessels is called an **AV** fistula.  
.....[1]
- (ii) State **one** way in which blood returning from the kidney machine will differ from blood leaving the body to enter the kidney machine.  
.....  
.....[1]

- (c) Describe the role in dialysis of each of these components of a kidney machine:

artificial membrane

.....  
.....

dialysis fluid

.....  
.....  
.....

[5]

3 Fig. 3.1 shows the flow of energy within a biological system.

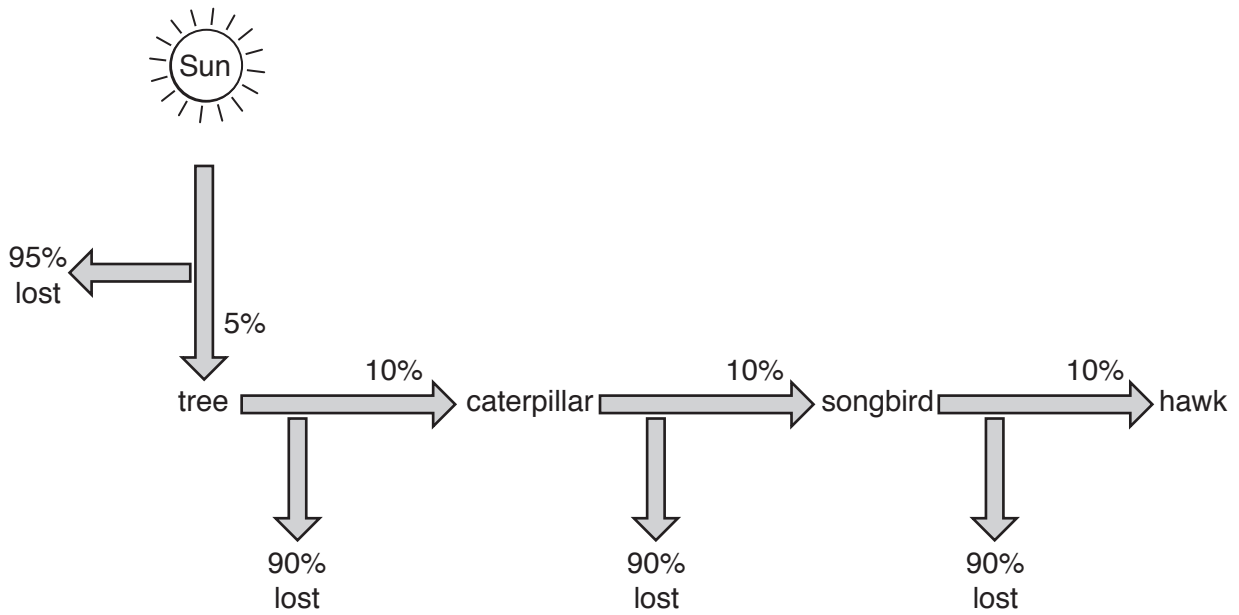


Fig. 3.1

(a) (i) Name the type of chart shown in Fig. 3.1.

..... [1]

(ii) Name **one** example, shown in Fig. 3.1, of each of the following types of organism.

producer .....

carnivore .....

[2]

(b) (i) Suggest why only 5% of the energy from the Sun passes to the tree.

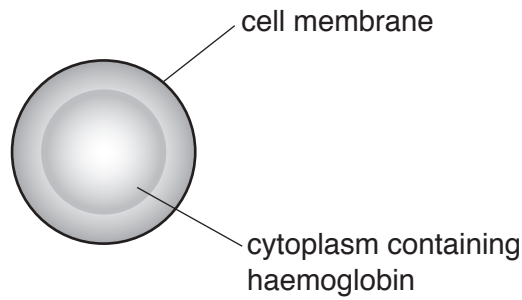
.....  
 .....  
 .....  
 ..... [2]

(ii) Describe how energy is lost between the songbird and the hawk.

.....  
 .....  
 .....  
 .....  
 ..... [3]



4 Fig. 4.1 shows a human cell.



**Fig. 4.1**

**(a)** Name and state the main function of the type of cell shown in Fig. 4.1.

name .....

function .....

..... [2]

**(b)** Suggest and explain what symptoms might be experienced by a person with an unusually low number of this type of cell.

.....  
.....  
.....  
.....  
.....  
.....  
.....  
.....  
.....  
..... [4]

**(c)** Explain what would happen to the cell shown in Fig. 4.1 if placed in pure water.

.....  
.....  
.....  
.....  
..... [3]

[Total: 9]





Section B

Answer **both** questions in this section.

6 Fig. 6.1a shows the right eye of a person **before** moving into an area of bright light.

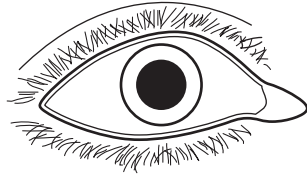


Fig. 6.1a

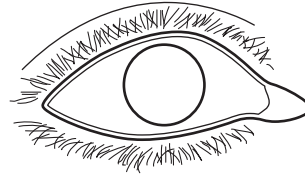


Fig. 6.1b

(a) (i) Complete Fig. 6.1b to show the appearance of the right eye of the person shortly **after** moving into an area of bright light. [1]

(ii) With reference to **named** structures within the eye, describe the changes that take place when a person moves into an area of bright light.

.....  
.....  
.....  
.....  
.....[5]

(b) Name the type of action that occurs to make the changes that you have described and suggest why it is important that these changes take place.

type of action .....

why the changes take place .....

.....  
.....  
.....

[4]

[Total: 10]

7 Fig. 7.1 shows a fermenter used for the production of an antibiotic.

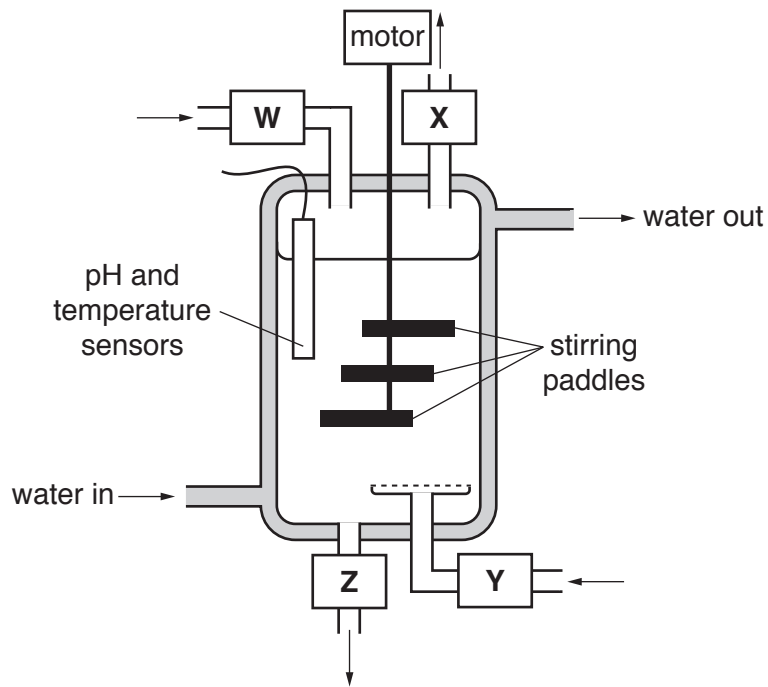


Fig. 7.1

(a) (i) Identify what enters or leaves through each of **W**, **X**, **Y** and **Z** in Fig. 7.1.

**W** .....

**X** .....

**Y** .....

**Z** .....

[4]

(ii) Explain the importance of the substance entering through **Y** in the production of the antibiotic.

.....  
 .....  
 ..... [2]

(b) Explain why it is important to detect and to control the pH and temperature of the contents of the fermenter.

.....  
.....  
.....  
.....  
.....[3]

(c) Suggest **one** advantage of the motor being located outside, rather than inside, the reaction vessel of the fermenter.

.....  
.....  
.....[1]

[Total: 10]

**Section C**

Answer **either** question 8 **or** question 9.

- 8 (a) With reference to specific examples, explain how and why diet should be related to the age and activity of an individual.

.....  
.....  
.....  
.....  
.....  
.....  
.....  
.....

[4]

- (b) Describe digestion in the human stomach.

.....  
.....  
.....  
.....  
.....  
.....  
.....  
.....  
.....  
.....  
.....  
.....  
.....  
.....  
.....  
.....  
.....  
.....  
.....

[6]

[Total: 10]





**BLANK PAGE**

---

Permission to reproduce items where third-party owned material protected by copyright is included has been sought and cleared where possible. Every reasonable effort has been made by the publisher (UCLES) to trace copyright holders, but if any items requiring clearance have unwittingly been included, the publisher will be pleased to make amends at the earliest possible opportunity.

To avoid the issue of disclosure of answer-related information to candidates, all copyright acknowledgements are reproduced online in the Cambridge International Examinations Copyright Acknowledgements Booklet. This is produced for each series of examinations and is freely available to download at [www.cie.org.uk](http://www.cie.org.uk) after the live examination series.

Cambridge International Examinations is part of the Cambridge Assessment Group. Cambridge Assessment is the brand name of University of Cambridge Local Examinations Syndicate (UCLES), which is itself a department of the University of Cambridge.